

KodeKLIX for PUP

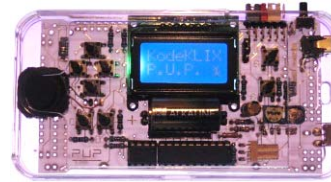
Quick Start Guide



Quick Start Guide

■ Required

- PUP hardware
- KodeKLIX software
- Download cable



- Serial or USB-to-Serial

- Windows™ PC* with serial or USB port

■ Optional

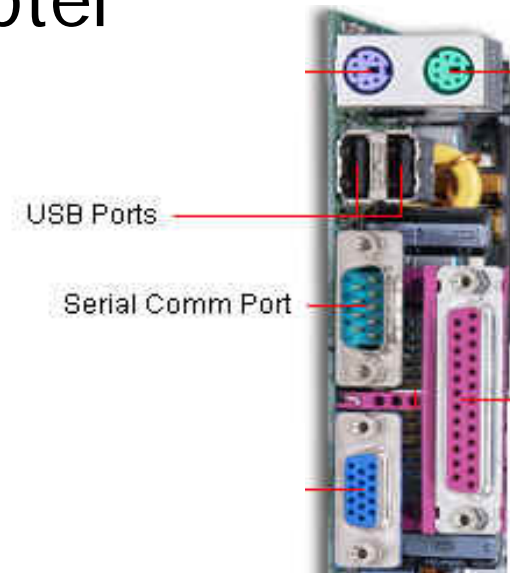
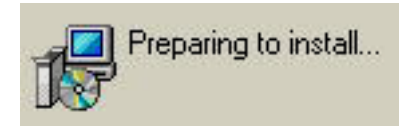
- PICAXE datasheets and user manual
- Expansion and “personality” cards

* WinXP or higher, 2GHz Celeron or faster
MS .net framework and DirectX9c will be installed.



Installation – Download Cable

- Driver for USB download cable
 - Either AXE027; or
 - If using HL-340 adapter, install driver before plugging cable
- Connect USB-to-Serial adapter to PC (if required)
 - Wait for USB ID and install to finish
- Alternatively, connect RS232 serial cable





Installation – KodeKLIX

- Install KodeKLIX software from internet download or distribution media
 - Start the “SETUP.MSI” program
 - Acknowledge the End User Licence Agreement (EULA)
 - Respond to Installer prompts
 - MS .net framework and DirectX9 (for sound playback) will also be installed



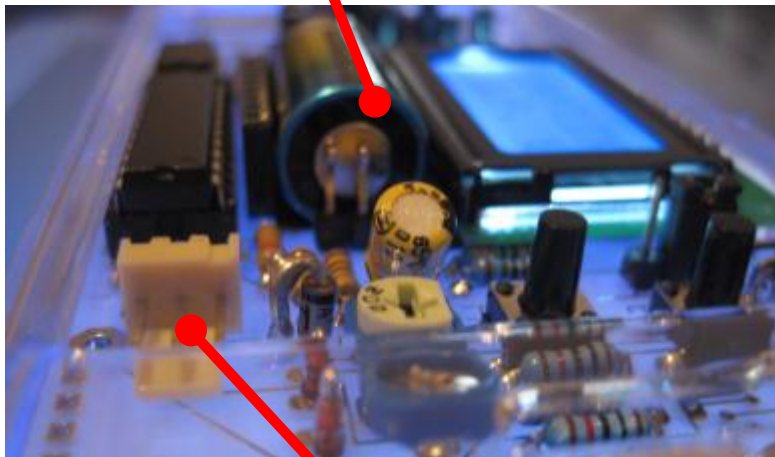


Installation – Power Up

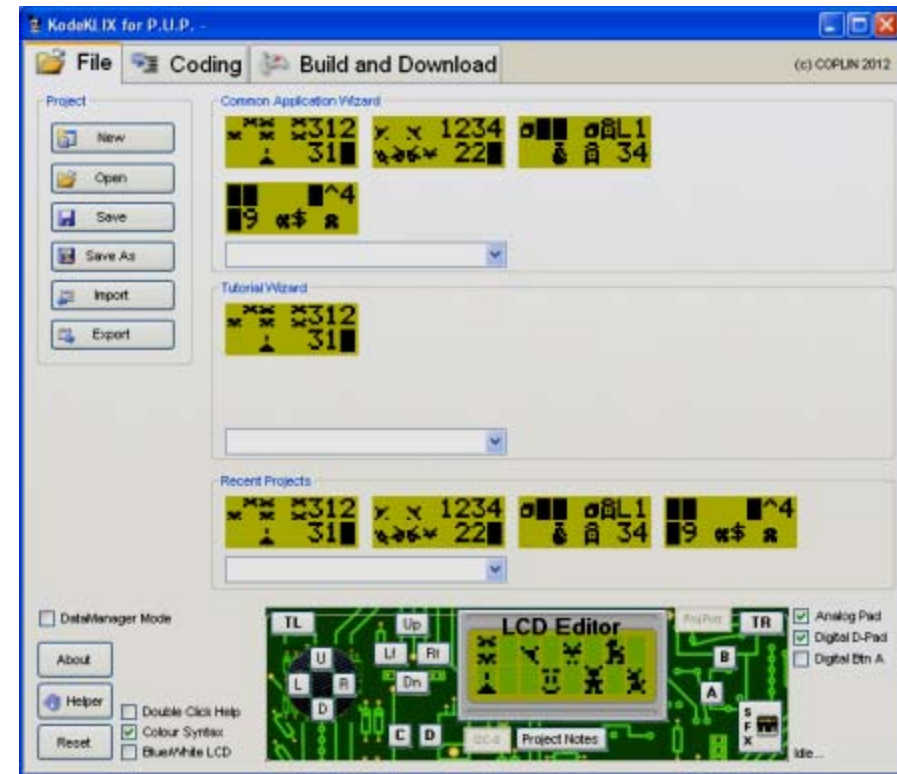
#1

- Install battery to PUP
- Connect download cable to PUP
- Start KodeKLIX

Battery*



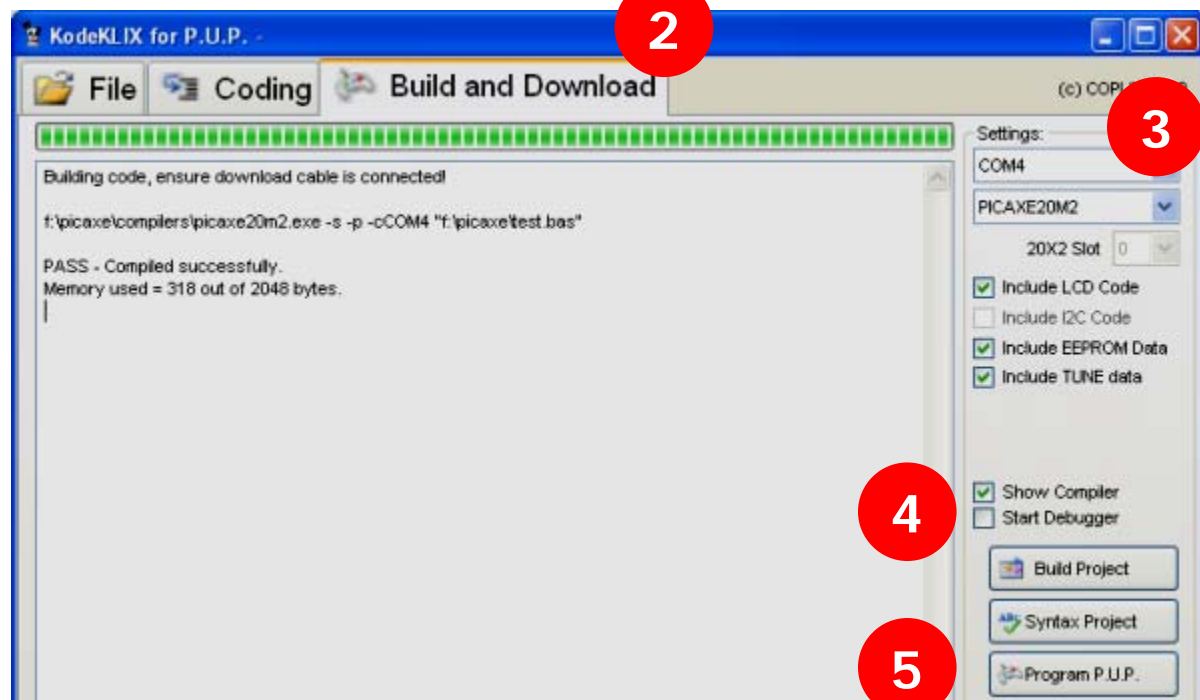
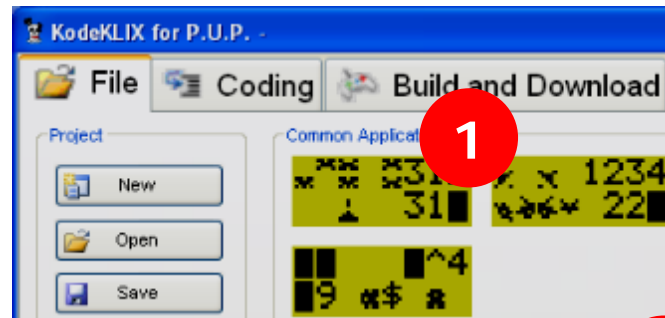
Download Port





Installation – 1st Download #2

1. Choose one of the pre-made apps from the **Common Application Window** by clicking screenshot
2. Change to the *Build and Download* application tab
3. Set COM port
4. Uncheck *Debugger*
5. Click *Program P.U.P.*

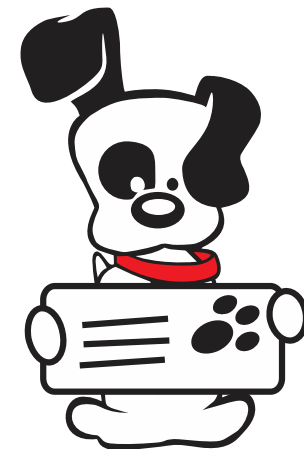
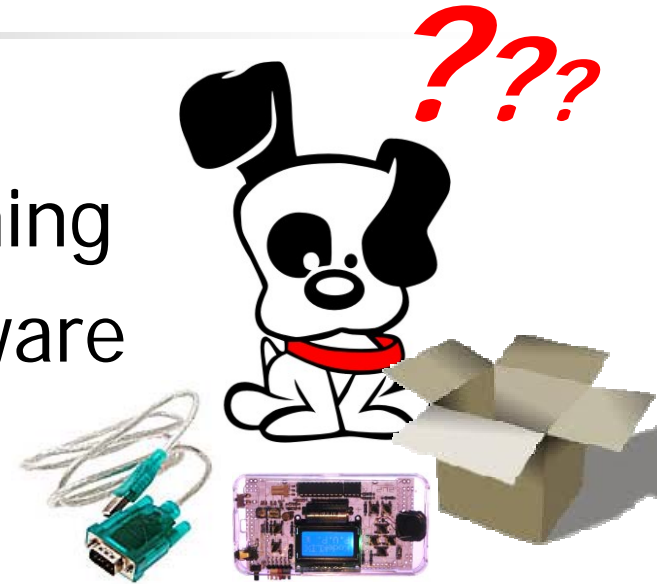




Got stuck?

- Recheck instructions
- Recheck you have everything
- Uninstall drivers and software
 - Re-install...

- www.kodeklx.com
- Email for support!





Enjoy!