

KodeKLIX for SnapCPU

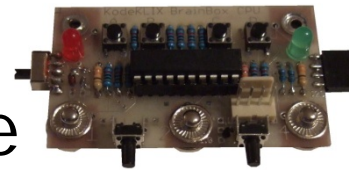
Quick Start Guide



Quick Start Guide

■ Required

- SnapCPU hardware
- KodeKLIX software
- Download cable



- Serial or USB-to-Serial

- Windows™ PC* with serial or USB port

■ Optional

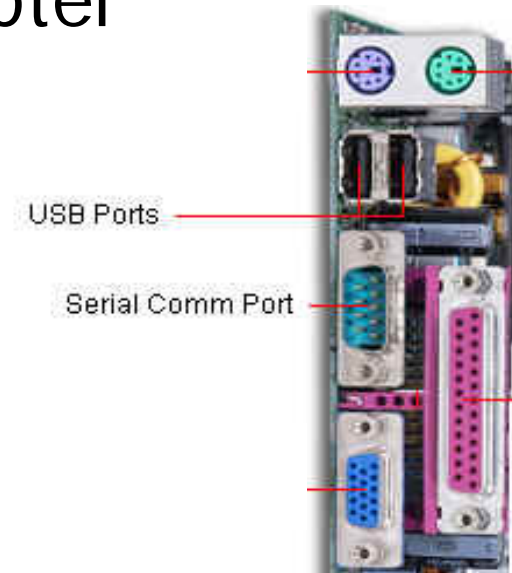
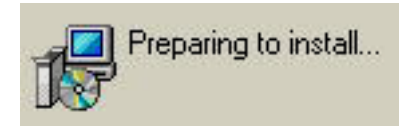
- PICAXE datasheets and user manual
- Expansion and “personality” cards

* WinXP or higher, 2GHz Celeron or faster
MS .net framework and DirectX9c will be installed.



Installation – Download Cable

- Driver for USB download cable
 - Either AXE027; or
 - If using HL-340 adapter, install driver before plugging cable
- Connect USB-to-Serial adapter to PC (if required)
 - Wait for USB ID and install to finish
- Alternatively, connect RS232 serial cable





Installation – KodeKLIX

- Install KodeKLIX software from internet download or distribution media
<http://www.kodeklx.com/demo/>
 - Start the “SETUP.MSI” program
 - Acknowledge the End User Licence Agreement (EULA)
 - Respond to Installer prompts
 - MS .net framework and DirectX9 (for sound playback) will also be installed





Installation – Power Up

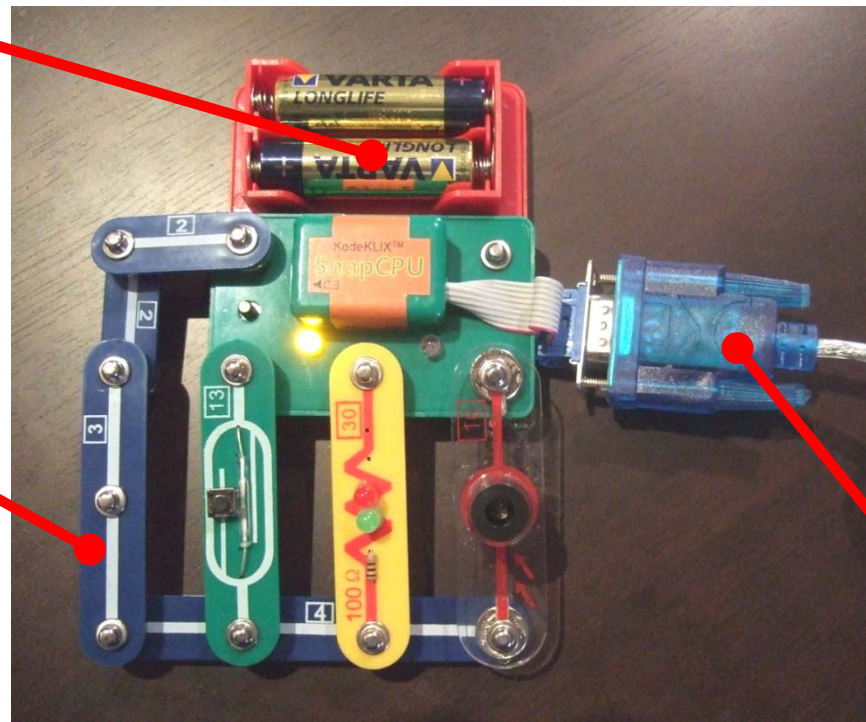
#1

SnapCPU Project Kits

- Assemble project or test circuit
- Battery pack required for power-up

Battery Pack*

Assembled
Snap Circuit



USB Download
Cable



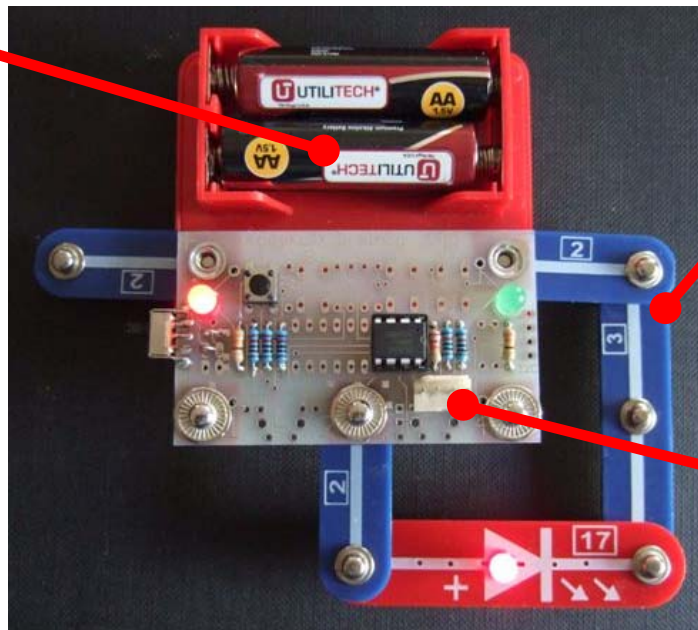
Installation – Power Up

#2

SnapCPU Boards: Basic, Experienced, Advanced

- Either connect battery or USB cable to in order to power the SnapCPU
- Assemble project or test circuit, and test!

Battery Pack*



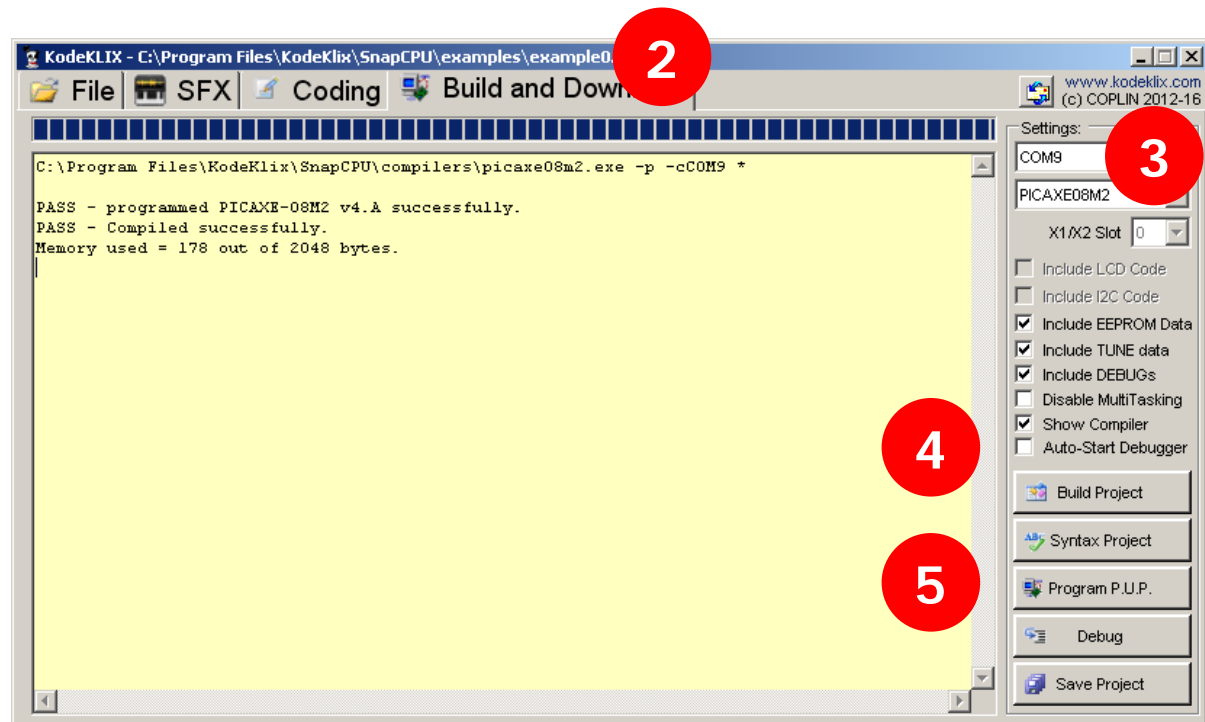
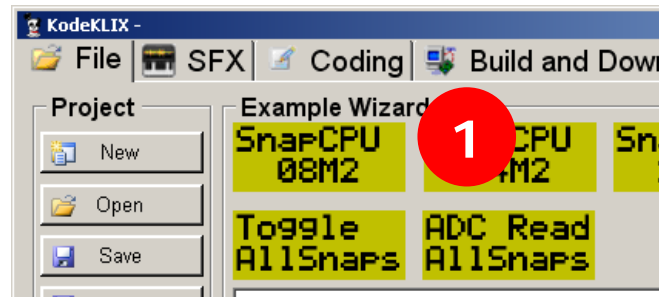
Assembled
Snap Circuit**

Download &
USB Power



Installation – 1st Download #3

1. Choose one of the pre-made apps from the [Example Wizard](#) by clicking screenshot
2. Change to the *Build and Download* application tab
3. Set COM port
4. Uncheck *Debugger*
5. Click *Program P.U.P.*

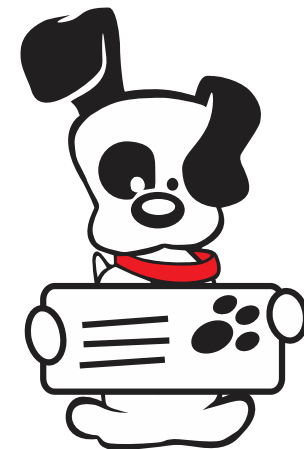
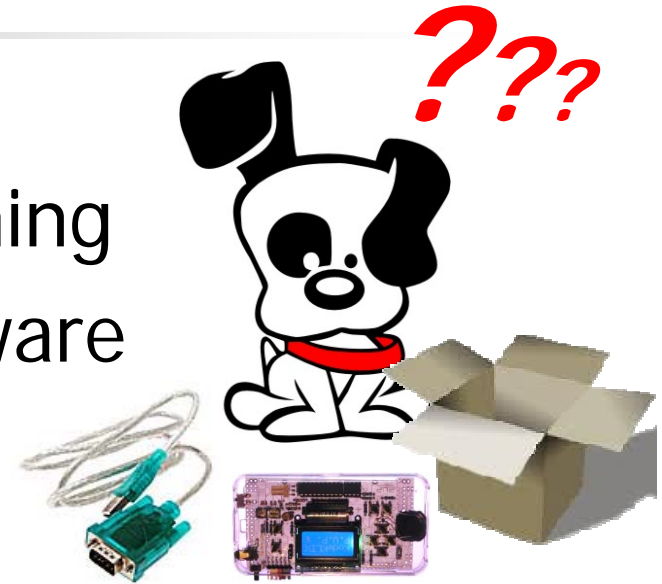


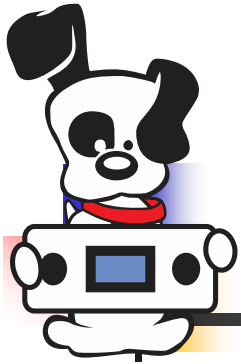


Got stuck?

- Recheck instructions
- Recheck you have everything
- Uninstall drivers and software
 - Re-install...

- www.kodeklx.com
- Email for support!





Enjoy!